



INFINITY

PLATINUM

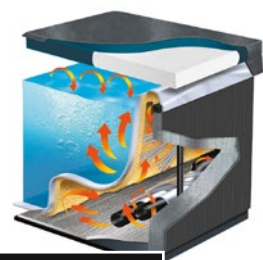
160



SIDE VIEW



COVER



THERMO LOCK SYSTEM



3 persons | 2 seats | 1 lounger
32 hydrotherapy jets
212 x 155 x 82 cm

Hot Tub Barn is rated
Excellent

Based on 1,400 reviews



★ Trustpilot

TECHNICAL DETAILS

PLATINUM 160

GENERAL

CAPACITY:	3 persons
VOLUME:	850 ltr
WEIGHT DRY:	288 kg
DIMENSIONS:	212 x 155 x 82 cm
JETS:	32 hydrotherapy jets



COVER MATE EX - COVER LIFTER

TECHNICAL DETAILS

POWER:	21amp
SHELL:	Optix™ XL Spa Acrylic
CABINET:	Low maintenance UV resistant PVC in Coastal Grey
BASE:	ABS
COVER:	Thermal Cover with alu foil
CONTROLS:	Gecko IN.YE3 control system Gecko IN.K1001 bar top control
HEATER:	Gecko Hi End 3kw Heater
LIGHTING:	2" Perimeter LED, Corner light, Backlit light
INSULATION:	Fully insulated foam shell and Thermo Lock insulation system
WATER FEATURE:	2.5" cascade
PUMPS:	2 x 2 hp LX jet pumps
CIRCULATION PUMP:	LX WTC50 Circ. Plumbing
SANITISER SYSTEM:	High efficient mixed ozone sanitisation
FILTRATION:	easy to clean in-spa filtration system, dual high efficient Blue Filter



2 TIER STEPS



Specifications are subject to change without notice.

OPTIONAL EXTRAS

COMMUNICATION SYSTEM:	Gecko In.Touch 2 Wifi Communication System
AUDIO:	Gecko In.Stream 2 Audio System
STEPS:	2 tier, colour matchable
COVER LIFTER:	Cover Mate EX

COLOUR OPTIONS

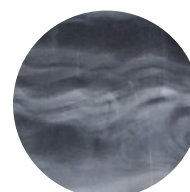


WARRANTY:

- 8 Year Structure
- 5 Year Surface
- 5 Year Gecko Hi Flow Heater, No Leak, Components
- 2 Year Cabinet
- 1 Year LED Lights
- 1 Year Ozone Generator, Trim and Cover



STERLING SILVER



STORM CLOUDS



ALBA

