



INFINITY

PLATINUM

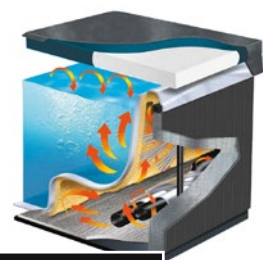
360



SIDE VIEW



COVER



THERMO LOCK SYSTEM



5 persons | 4 seats | 1 lounger
36 hydrotherapy jets
200 x 200 x 82 cm

Hot Tub Barn is rated Excellent

Based on 1,400 reviews



Trustpilot

TECHNICAL DETAILS

PLATINUM 360

GENERAL

| | |
|-------------|----------------------|
| CAPACITY: | 5 persons |
| VOLUME: | 870 ltr |
| WEIGHT DRY: | 335 kg |
| DIMENSIONS: | 200 x 200 x 82 cm |
| JETS: | 36 hydrotherapy jets |



COVER MATE EX - COVER LIFTER

TECHNICAL DETAILS

| | |
|-------------------|--|
| POWER: | 21amp |
| SHELL: | Optix™ XL Spa Acrylic |
| CABINET: | Low maintenance UV resistant PVC in Coastal Grey |
| BASE: | ABS |
| COVER: | Thermal Cover with alu foil |
| CONTROLS: | Gecko IN.YE3 control system Gecko IN.K1001 bar top control |
| HEATER: | Gecko Hi End 3kw Heater |
| LIGHTING: | 2" Perimeter LED, Corner light, Backlit light |
| INSULATION: | Fully insulated foam shell and Thermo Lock insulation system |
| WATER FEATURE: | 2.5" cascade |
| PUMPS: | 2 x 3 hp LX jet pumps |
| CIRCULATION PUMP: | LX WTC50 Circ. Plumbing |
| SANITISER SYSTEM: | High efficient mixed ozone sanitisation |
| FILTRATION: | easy to clean in-spa filtration system, dual high efficient Blue Filter |



2 TIER STEPS



Specifications are subject to change without notice.

OPTIONAL EXTRAS

| | |
|-----------------------|--|
| COMMUNICATION SYSTEM: | Gecko In.Touch 2 Wifi Communication System |
| AUDIO: | Gecko In.Stream 2 Audio System |
| STEPS: | 2 tier, colour matchable |
| COVER LIFTER: | Cover Mate EX |

COLOUR OPTIONS

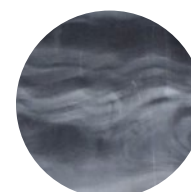


WARRANTY:

- 8 Year Structure
- 5 Year Surface
- 5 Year Gecko Hi Flow Heater, No Leak, Components
- 2 Year Cabinet
- 1 Year LED Lights
- 1 Year Ozone Generator, Trim and Cover



STERLING SILVER



STORM CLOUDS



ALBA

