

# HOT TUBS & SWIMSPAS

AUTUMN WINTER



**oasis**  
**spas** UK





# OASIS INSULATION

why Oasis Spas are Different

Save money on your energy bill

## THERMAL LOCK



### Oasis Spas Thermal Lock R18 System

Insulation Solution	Skirt Thermal Lock	SPA Base Thermal Lock	In Spa Insulation	Features
<b>RX</b> Cabinet Insulation	Dual-aluminum soft wool(3mm) + one-layer PE wool(15mm)	One-layer dual-aluminum soft wool(3mm)	full soft foam insulation sprayed onto the inside of the spa not only holding pipework in place but giving high energy efficiency	Reliable thermal solution with basic insulation to lock the heat inside the spa within the cabinet.
<b>HE / SWIM</b> Overall Thermal lock	Dual-aluminum soft wool(3mm) + one-layer PE wool(15mm)	One-layer dual-aluminum soft wool(3mm)	full soft foam insulation sprayed onto the inside of the spa not only holding pipework in place but giving high energy efficiency	Reliable and most widely used thermal solution with extra insulation on the bottom, providing a higher efficiency heat lock function.



PROUD TO BE DIFFERENT



# Model AS-60D



over 19ft



over 14ft

## Ultimate swim experience

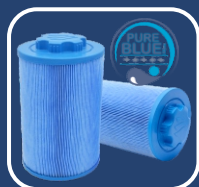
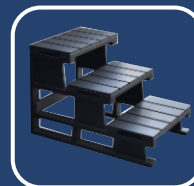
Our exclusive "Turbo Jets" are unlike any other on the market, providing a smooth and straight water stream, giving user unbeatable swim experience.



## QUALITY SWIM

INTERNATIONAL MANUFACTURER

Seats / Stand ups / Lounger	5 / 1 / 2
Hydro Jets / Air Jets / swim jets	106 + 12 + 4 Total 122
Spa performance pump	x4 3HP x2 2HP x2 Circ
Swim Spa music	IN. Stream and Sub
Multi colour LED light	Yes
Gecko controller Touch IN.1001 + IN.YE5	Yes
ABS Plastic sealed base	Yes
Maintenance free cabinet	Yes
Stainless steel heater	3 + 3 kW
Galvanized steel frame	Yes
High density lockable cover	Yes
Perimeter LED & Ozone	Yes
Shell foam insulation	6 layer shell with 10mm High form
Side skirt insulation	Full Foam & 15mm Dual-aluminum foil
Ozone water unit	Yes
American acrylic	Yes



8 People



5.9m x 2.25m x 1.29m



6769 / 1222g Empty weight



32 Amp hard wire



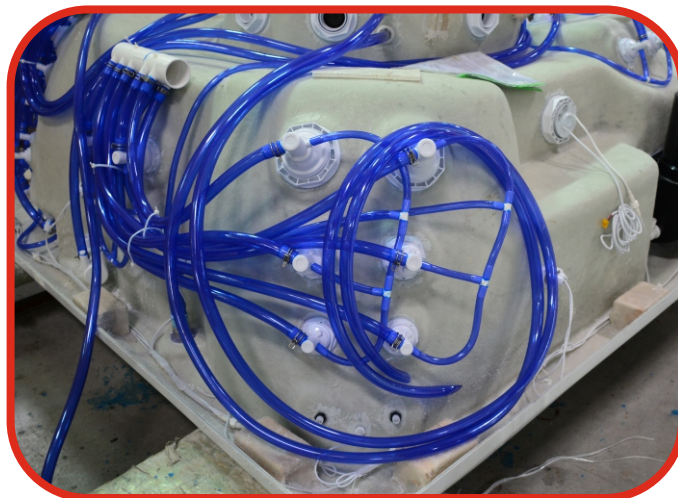


# The Build

with Oasis Spas Difference  
Step by Step to perfection



10mm High density insulation foaming on the spa shell



#High quality NSF piping with IPS glue with spring clips #only on HE range



Tough build treated timber frame with triple reinforced corners & cross bracing supports



Most important the Full high density Soft PE foaming with a massive **R18 rating**



*PROUD TO BE DIFFERENT*





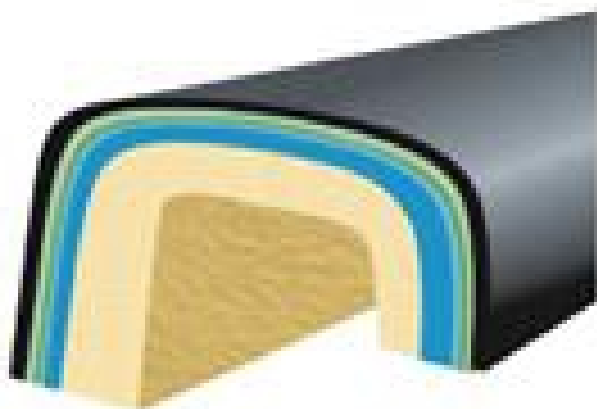
# RELAX

## with Oasis Quality

6 Layer Shell build up like no other



- 1 American made Aristech/Lucite acrylic surface
- 2 Hand painted pure vinyl ester resin for adhesion
- 3 Sprayed layer of vinyl ester resin/fibreglass composite.
- 4 Marine grade polyester resin/fibreglass composite for strength.
- 5 2nd layer of polyester resin/fibreglass composite.
- 6 High density closed cell (waterproof) foam insulation



8-10 mm 6-layer sheet structuring,  
Upto 8 years warranty policy\*.

Minimized possibility in disruption,  
blistering, or separation.

Functional from -40 to 70 degrees.

*PROUD TO BE DIFFERENT*





**oasis**  
**spas** UK



Manufacturer



See or Try  
Before You Buy



UK Wide  
Lifetime Support



Quality Spas at  
Amazing Prices