

HOT TUBS & SWIMSPAS

AUTUMN WINTER



oasis
spas UK



OASIS INSULATION

why Oasis Spas are Different

Save money on your energy bill

THERMAL LOCK



Oasis Spas Thermal Lock R18 System

Insulation Solution	Skirt Thermal Lock	SPA Base Thermal Lock	In Spa Insulation	Features
RX Cabinet Insulation	Dual-aluminum soft wool(3mm) + one-layer PE wool(15mm)	One-layer dual-aluminum soft wool(3mm)	full soft foam insulation sprayed onto the inside of the spa not only holding pipework in place but giving high energy efficiency	Reliable thermal solution with basic insulation to lock the heat inside the spa within the cabinet.
HE / SWIM Overall Thermal lock	Dual-aluminum soft wool(3mm) + one-layer PE wool(15mm)	One-layer dual-aluminum soft wool(3mm)	full soft foam insulation sprayed onto the inside of the spa not only holding pipework in place but giving high energy efficiency	Reliable and most widely used thermal solution with extra insulation on the bottom, providing a higher efficiency heat lock function.



PROUD TO BE DIFFERENT



HE BUILD

with Oasis Spas Difference

Step by Step to perfection

How much does it cost to run a hot tub?

Many companies make suspicious claims about the running costs of their hot tubs & spas, and there are very few that can prove the low energy consumption of their products.

Use HE Series for 5 x 30 minute sessions per week with a maintained water temperature of 38°C, and the average weekly electricity running cost starts from £5-£10 per week. This figure is based on the average weekly cost, worked out over a one year period, with the spa installed outdoors in the UK.



Tough build treated timber frame with triple reinforced corners & cross bracing supports. With 10mm high density insulation foaming added the 8mm spa shell followed by 100mm soft full foam.

High density synthetic wood cabinet has an extreme high level of insulation Heat Lock to stop heat escaping with the added benefit of a NO GAP PVC base.

Hydrotherapy jets are the forefront of your massage here at Oasis Spas we offer the very best in spa jet technology. The new diamond self cleaning bearing less jets in both directional and single rotary and double rotary jets. Including Oasis illuminated diverter and air valves



Each HE series model features an Easy care CD ozone with boost chamber. This kills more germs and breaks down body oils for reduced chemicals usage giving crystal clear water. Plus x2 high efficient PURE BLUE spa filters



PROUD TO BE DIFFERENT



ENJOY LIFE

as standard on HE range

Lights and music makes a world of difference



Built-in universal power supply
Robust, fully splashproof (IPx5) enclosure
Powerful and efficient class D amplifiers
Up to 4 speakers outputs (200W at 4 Ohms)
1 subwoofer output (100W at 2 Ohms)
1 auxiliary input
4x audio sources: Aux in, USB stick
FM radio and Bluetooth streaming





Model HE-570

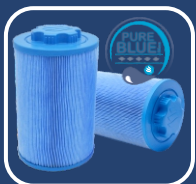


**WHATPOOL
& HOT TUB
TOP 30 WINNER**

QUALITY SPAS AT ULTIMATE PRICES

INTERNATIONAL MANUFACTURER

Seats / Loungers	3 / 2
Hydro massage jets	45
High performance pump	x2 3.0HP x1 Circulation
Stainless steel heater	3kW
Multi colour LED light	Yes
Gecko Digital controller	Yes
ABS Plastic sealed base	Yes
Maintenance free cabinet	Yes
Self cleaning bearingless jets	Yes
Strong cross braced frame	Yes
High density lockable cover	Yes
Perimeter LED & corner lights	Yes
Shell foam insulation	6 layer shell with 10mm High form
Side skirt insulation	Full Foam & 15mm Dual-aluminum foil
Ozone water unit & mixing tube	Yes
American acrylic	Yes



5 People



2.12m x 2.12m x .93m



1350L / 391kg Empty weight



32 Amp hard wire

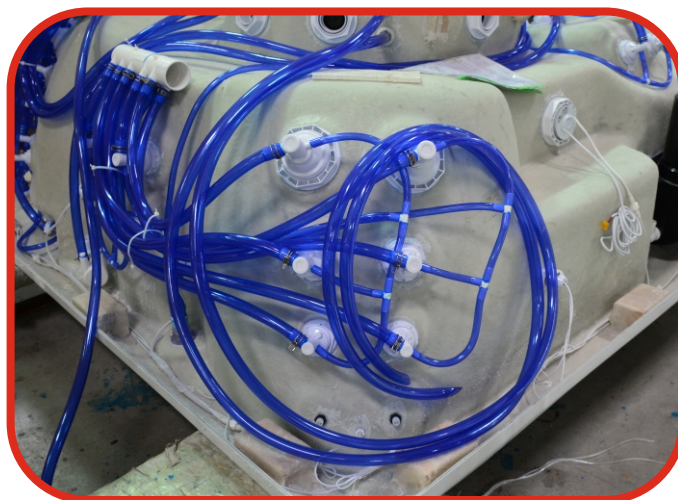


The Build

with Oasis Spas Difference
Step by Step to perfection



10mm High density insulation foaming on the spa shell



#High quality NSF piping with IPS glue with spring clips #only on HE range



Tough build treated timber frame with triple reinforced corners & cross bracing supports



Most important the Full high density Soft PE foaming with a massive **R18 rating**



PROUD TO BE DIFFERENT



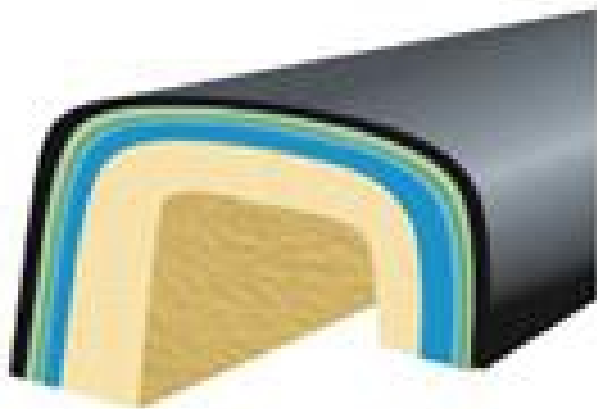
RELAX

with Oasis Quality

6 Layer Shell build up like no other



- 1 American made Aristech/Lucite acrylic surface
- 2 Hand painted pure vinyl ester resin for adhesion
- 3 Sprayed layer of vinyl ester resin/fibreglass composite.
- 4 Marine grade polyester resin/fibreglass composite for strength.
- 5 2nd layer of polyester resin/fibreglass composite.
- 6 High density closed cell (waterproof) foam insulation



8-10 mm 6-layer sheet structuring,
Upto 8 years warranty policy*.

Minimized possibility in disruption,
blistering, or separation.

Functional from -40 to 70 degrees.

PROUD TO BE DIFFERENT



oasis **spas** UK



Manufacturer



See or Try
Before You Buy



UK Wide
Lifetime Support



Quality Spas at
Amazing Prices